

Top 10 Reasons to Add Data Management to Your Design Process

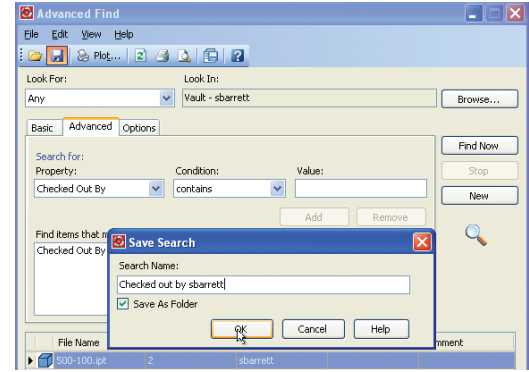
A Practical Approach to Data Management

In today's manufacturing environment, accelerating product development cycles is the key to staying ahead of the competition. By improving reuse of design data and collaboration between design team members, and by automating the design process, companies can shorten development cycles and get products to market faster.

Maximize the return on your company's investment in design data by driving design reuse. By centralizing the storage of all engineering data and related documents, users can better organize information and reduce the time needed to find, reference, and reuse design data. As product designs evolve and become more complicated, the Autodesk® Productstream® family of product data management (PDM) applications protect designers and engineers from unintentional overwriting of good designs. In addition, users can save hours of valuable design time with powerful tools to rapidly copy and reuse design data, reducing the time required to start a new design.

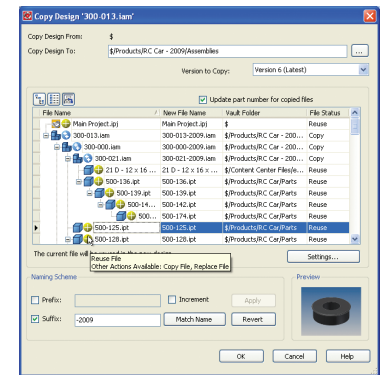
1. Organize and Search

With the ability to vault any file, perform basic and advanced searches, and organize data to suit your design process, Autodesk Productstream improves users' ability to find and reuse valuable design information.



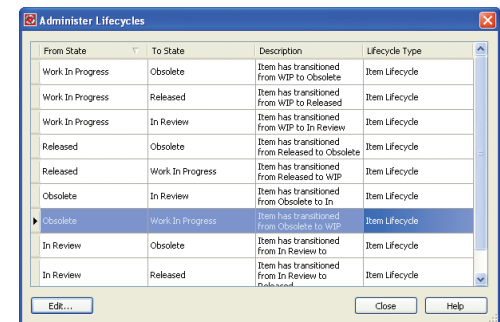
2. Copy Designs

Save hours with powerful copy functionality that prevents users from having to re-create models and drawings. Users can copy an entire design, including all related files. This process creates a new design and provides the option to choose which files are copied and given new names, and which files are reused.



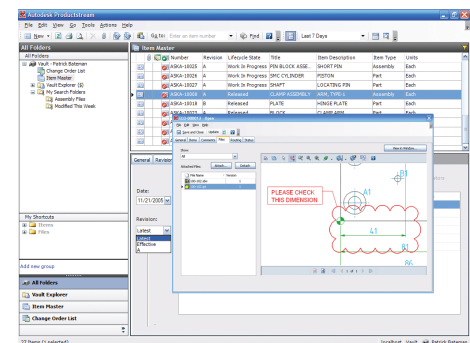
3. Revisions and Lifecycles

Prevent CAD users from working on incorrect revisions or manufacturing teams building from designs that are under change. All of the PDM applications in the Autodesk Productstream family provide flexible, secure revision and lifecycle schemes that give users full control over the lifecycle of any design data.



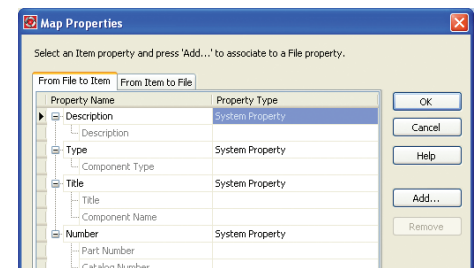
4. 2D and 3D Viewing and Markup

Quickly complete reviews and gather comments on designs using DWF™ technology to reduce communication errors in design reviews. Built-in Autodesk® Design Review software provides powerful viewing, markup, and measure functionality.



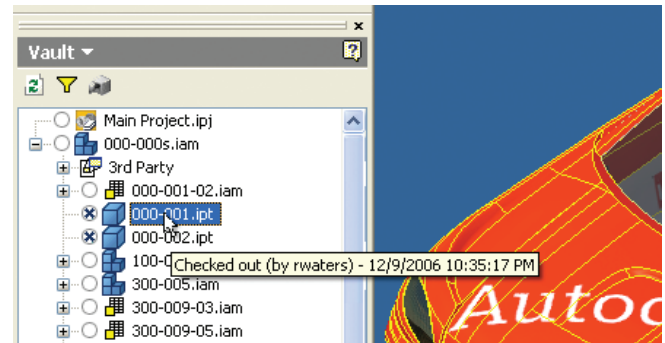
5. Property Mapping

Bidirectional property mapping allows attributes to be exchanged and synchronized between CAD files (Autodesk® Inventor™, AutoCAD®, AutoCAD® Mechanical, and AutoCAD® Electrical) and vaulted items.



6. Multiuser Management

Allow multiple users to safely and simultaneously interact with the same design data without worrying about overwriting each other's data.

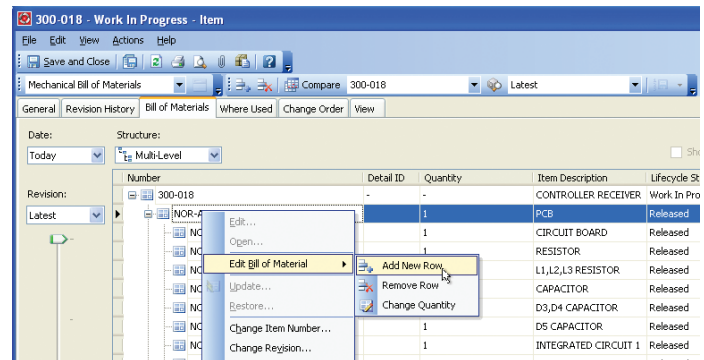


7. Multi-CAD and Office Integration

Capture, manage, and reuse all design-related information throughout the product lifecycle. Autodesk data management tools are tightly integrated with all Autodesk manufacturing products, SolidWorks®, Pro/ENGINEER®, and Microsoft® Office.

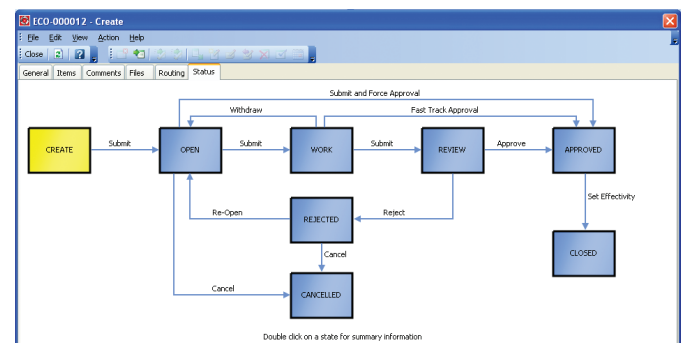
8. BOM Management

Exercise complete control over the bill of materials (BOM) using a simple interface to manage materials and quantities required for a design. Create a BOM directly from the CAD part structure, and then add, delete, or change BOM items and quantities to maintain a true engineering BOM.



9. Automated Release Process

Manual processes for release and change can lead to design project delays and shop-floor errors. Autodesk's PDM applications give design teams the choice of standard or configurable processes for release and engineering change order management, helping them avoid costly mistakes and remove process bottlenecks.



10. Understand the Impact of Change

Discover and understand the impact of changing a design before committing to it. With simple "Where Used" and "Uses" functionality, users can analyze where specific files and items (CAD and non-CAD) have been used across multiple assemblies, drawings, and BOMs.

Now Is the Time

Now is the time to take a look at Autodesk data management applications. If you want to shorten your product development cycles and produce higher-quality manufactured goods while avoiding the complications, Autodesk provides the data management tools, without the expense traditionally associated with other PDM systems.

For more information on Data Management applications from Autodesk, please visit www.autodesk.com/productstream.

To locate the reseller nearest you, visit www.autodesk.com/reseller.

File Name	Version	Created By	Checked In	Comment
M3.ipt	1	sbarrett	12/7/2006 8:56 ...	
M4.ipt	2	sbarrett	12/9/2006 10:1...	

File Name	Version	Created By	Checked In	Comment
M4.ipt	2	sbarrett	12/9/2006 10:12...	
300-014.iam	4	sbarrett	12/9/2006 6:56 PM	Move File
300-013.iam	6	sbarrett	12/9/2006 6:52 PM	Move File
100-001.iam	7	sbarrett	12/9/2006 6:56 PM	Move File
300-025.iam	5	sbarrett	12/9/2006 10:12...	
100-001.iam	7	sbarrett	12/9/2006 6:56 PM	Move File
300-025.idw	1	sbarrett	12/9/2006 10:11...	
300-027.iam	4	sbarrett	12/9/2006 6:50 PM	Move File
100-001.iam	7	sbarrett	12/9/2006 6:56 PM	Move File